



ProReel Cable reel

Application form – Custom built reel

Date :/...../.....

Company:

Address:

Name:

Function:

Company activity:

Tel.:

Fax.:

E-mail:

Mobile:

1. Application Data

Please give short description of the application.

2. Environment Data

2.1 Location of installation Indoor outdoor

2.2 Temperature Ambient extreme: _____

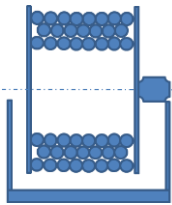
2.3 IP Classification IP44 IP54 IP65 IP67

Please indicate additional data: humidity, dust exposure, vibrations or chemical vapours, marine environment.

3. Technical Data - Reel

3.1 Cable reel type:

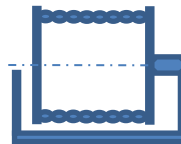
Multi Wrap



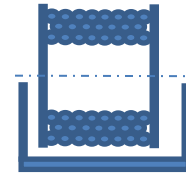
Single Wrap



Mono Wrap



Storage reel



3.2 Wind up and off situation

Vertical

Horizontal

3.3 Material Reel

Painted Steel RAL _____

Aluminium

Stainless Steel 304

Stainless Steel 316

3.4 Material Frame

Painted Steel RAL _____

Aluminium

Stainless Steel 304

Stainless Steel 316

3.5 Max. Dimensions

No constraints

Height: _____mm

Width: _____mm

Depth: _____mm

3.6 Usage

_____ times per day

3.7 Unwind

Pneumatic

Electric

Hydraulic

Spring

Manual

3.8 Unwind Speed

___ minutes to wind ___ meters (___meter/minute)

3.9 Rewind

Pneumatic

Electric

Hydraulic

Spring

Manual

- 3.10 Rewind Speed _____ minutes to wind _____ meters (_____meter/minute)
- 3.11 Control Type
 None
 Left / Right switch
 Command console with frequency controller
 Remote Control IR (infra red)
 Remote Control RF (radio frequency)
- 3.12 Motor specifications
Electric: _____ Vac /Vdc - _____ Hz
Pneumatic: _____ Bar
Hydraulic : _____ Bar
- 3.13 Slip Rings
 Yes
 No
- 3.14 Ratchet Lock
 Yes
 No
- 3.15 Self Breaking
 Yes
 No
- 3.16 Man. Emergency Function
 Yes
 No
- 3.17 Transport Lock
 Yes
 No
- 3.18 Cable Guide
 None
 Top 3-Way
 Bottom 3-Way
 Top 4-Way
 Bottom 4-Way
 Force Guide
 Swivelling Guide
 Sliding Guide

4. Technical Data - Cable

- 4.1 Supply of Cable: Provided by customer
 Provided by Pago (always quoted separately)
- 4.2 External Cable diameter ___ mm
- 4.3 Number of Cores ___ cores
- 4.4 Nominal Cross Section ___ mm²
- 4.5 Cable length ___ meter
- 4.6 Cable weight ___ kg/meter
- 4.7 Bending Radius ___ mm
- 4.8 Supply cable None
 Yes, ___ meters
- 4.9 Current ___ A
- 4.10 Voltage ___ V

5. Additional Data

Quantity: _____ piece(s)

Remarks: