



ProReel Hose reel

Application form – Custom built reel

Date :/...../.....

Company:

Address:

Name:

Function:

Company activity:

Tel.:

Fax.:

E-mail:

Mobile:

1. Application Data

Please give short description of the application.

1.1 Medium _____

1.2 Working Pressure _____

1.3 Maximal pressure _____

2. Environment Data

2.1 Location of installation Indoor outdoor

2.2 Temperature Ambient extreme _____

2.3 IP Classification IP44 IP54 IP65 IP67

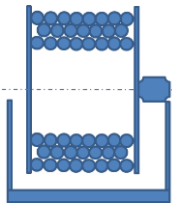
Please indicate additional data: humidity, dust exposure, vibrations or chemical vapours, marine environment.

In all our contracts, tenders and contracts with us, the general purchasing, delivery and payment conditions of Pago Oprolsystemen apply. If you are not in possession of these conditions please inform us so that a copy will be sent free of charge.

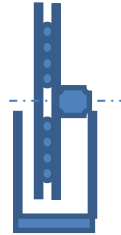
3. Technical Data - Reel

3.1 Hose reel type

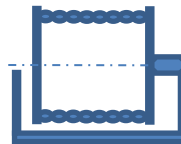
Multi Wrap



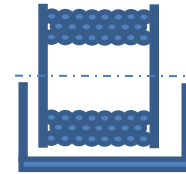
Single Wrap



Mono Wrap



Storage reel



3.2 Wind/rewind situation

Vertical

Horizontal

3.3 Material reel

- Painted Steel RAL _____
- Aluminium
- Stainless Steel 304
- Stainless Steel 316

3.4 Material frame

- Painted Steel RAL _____
- Aluminium
- Stainless Steel 304
- Stainless Steel 316

3.5 Max. dimensions

- No constraints
- Height: _____mm
- Width: _____mm
- Depth: _____mm

3.6 Usage

_____ times per day

3.7 Unwind

- Pneumatic
- Electric
- Hydraulic
- Spring
- Manual

3.8 Unwind speed:

___ minutes to wind ___ meters (___meter/minute)

3.9 Rewind

- Pneumatic
- Electric
- Hydraulic
- Spring
- Manual

3.10 Rewind speed

___ minutes to wind ___ meters (___meter/minute)

In all our contracts, tenders and contracts with us, the general purchasing, delivery and payment conditions of Pago Oprolsystemen apply. If you are not in possession of these conditions please inform us so that a copy will be sent free of charge.

-
- 3.11 Control Type None
 Left / Right switch
 Command console with frequency controller
 Remote Control IR (infra red)
 Remote Control RF (radio frequency)
- 3.12 Motor specifications Electric: _____ Vac /Vdc - _____ Hz
Pneumatic: _____ Bar
Hydraulic : _____ Bar
- 3.13 Swivel Yes
 No
- 3.14 Ratchet Lock Yes
 No
- 3.15 Self Breaking Yes
 No
- 3.16 Man. Emergency Function Yes
 No
- 3.17 Transport Lock Yes
 No
- 3.18 Hose Guide None
 Top 3-Way
 Bottom 3-Way
 Top 4-Way
 Bottom 4-Way
 Force Guide
 Swivelling Guide
 Sliding Guide



4. Technical Data - Hose

- 4.1 Provision of hose Provided by customer
 Provided by Pago (always quoted separately)
- 4.2 Internal hose diameter ___ mm
- 4.3 External hose diameter ___ mm
- 4.4 Number of hoses 1 hose
 ___ hoses
- 4.5 Hose length ___ meter
- 4.6 Hose weight ___ kg/meter
- 4.7 Bending Radius ___ mm
- 4.8 Supply hose None
 Yes, ___ meter
- 4.9 Connections None
 standard BSP
 different type _____

5. Additional Data

Quantity: _____ piece(s)

Remarks: